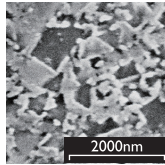
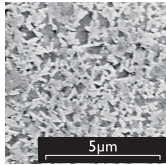


# SOLID CARBIDE

## 硬質合金

### QMG

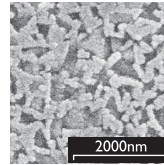
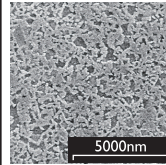
ISO-Classification		K10-K30
Diameter	(mm)	1.2-32.2
Co	(%)	9.0
W/C+Cr <sub>3</sub> C <sub>2</sub> +vc	(%)	91.0
Density	(g/cm <sup>3</sup> )	14.40
HV <sub>30</sub>	(kg/mm <sup>2</sup> )	1920
HRA	(ISO3738)	93.9
K <sub>IC</sub>	(MNm <sup>-3/2</sup> )	9.3
TRS	(N/mm <sup>2</sup> )	> 4000
	A	≤ 02
Porosity	B	00
	C	00
WC-grain size	(μm)	0.2-0.5



Co %	9
WC incl. Doping (%)	89.83
Tungsten Carbide α	ø0.2μm

### SMG

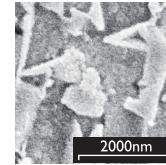
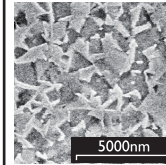
ISO-Classification		K40-K50
Diameter	(mm)	1.2-42.2
Co	(%)	12.0
W/C+Cr <sub>3</sub> C <sub>2</sub> +vc	(%)	88.0
Density	(g/cm <sup>3</sup> )	14.05
HV <sub>30</sub>	(kg/mm <sup>2</sup> )	1680
HRA	(ISO3738)	92.5
K <sub>IC</sub>	(MNm <sup>-3/2</sup> )	10.0
TRS	(N/mm <sup>2</sup> )	> 4000
	A	≤ 02
Porosity	B	00
	C	00
WC-grain size	(μm)	0.5



Co %	12
WC incl. Doping (%)	88
Tungsten Carbide α	ø0.4μm

### MG

ISO-Classification		K40-K50
Diameter	(mm)	1.2-42.2
Co	(%)	10.0
W/C+Cr <sub>3</sub> C <sub>2</sub> +vc	(%)	90.0
Density	(g/cm <sup>3</sup> )	14.5
HV <sub>30</sub>	(kg/mm <sup>2</sup> )	1610
HRA	(ISO3738)	92.3
K <sub>IC</sub>	(MNm <sup>-3/2</sup> )	10.5
TRS	(N/mm <sup>2</sup> )	> 4000
	A	≤ 02
Porosity	B	00
	C	00
WC-grain size	(μm)	0.6



Co %	10
WC incl. Doping (%)	90
Tungsten Carbide α	ø0.6μm